

Rangelands Policy Dialogue

Crafting a Declaration for a Sustainable Rural Future in the Rangelands – Markets, Debt, Water, Drought and Climate Change

PROGRAM

DAY 1 – Mon, 1 July

Welcome to country, housekeeping, intros, and rev-up



Time	Mins	Theatre
08:30	90	<i>Registration and settling in</i>
10:00	5	Ring the bell – John Brisbin, MC
10:05	5	Welcome to Country Aunty Carol Kennedy – On behalf of the Jagera-Turrbal People
10:10	10	Background to the Dialogue Dr Greg Leach, AgForce; Dr Geoff Edwards, Royal Society; Andrew Drysdale (for Ian Heiner), NRM Regions Queensland
10:20	7	How we see the flow and reflection – MC

Overall purpose: to amplify the collective wisdom of those present through synthesis and dialogue.

Firing up the discussion

Time	Mins	Theatre – Sparkplug sessions [Round 1]
10:30	10	Rangelands: Context and Issues Heather Douglas, sociologist
10:40	15	Rural debt and viability Ben Rees, economist
10:55	10	Peak oil/peak demand Michael Gutteridge, consultant geographer
11:05	10	Banks as stakeholders in the Rangelands Brad James, Queensland State Manager, Rabobank
11:25	10	Soils Rod Chisholm, CEO, Soils for Life
11:35	15	Climate change – likely impacts across bioregions Prof Roger Stone, Director, Climate Centre USQ
11:50	10	Reflections from a grazier Charles Nason, Banoona, Roma
12:00	10	Climate change – current attitude of the farming community Verity Morgan-Schmidt, Farmers for Climate Action
12:10	30	Panel discussion, questions, and synthesis
12:45	45	LUNCH
13:30	10	After lunch re-charge – in Plenary – provocative video/slideshow/images / movement Nominated delegates go to Seminar Room to set up Synthesis Working panels

		Theatre: Sparkplug sessions [Round 2]	Seminar Room: Synthesis – Working panels
13:45	10	Regional Ecosystem Biodiversity status and Biocondition assessment Dr Teresa Eyre, Qld Herbarium	Discussion of process and synthesis strategy
13:55	15	Conservation and management turning points Paul Sattler, beekeeper, retired public servant	Collaborative work on sample of notes from sparkplugs
14:10	10	How to transition to regenerative agriculture Dr Terry McCosker, CEO, Resource Consulting Services	(...Group work on synthesis and issue mapping...)
14:20	10	National Parks and tourism Dr Martin Taylor, World Wide Fund for Nature	
14:30	10	NRM regions: current capacity and future needs Andrew Drysdale <i>(on behalf of Ian Heiner, CEO NRM Regions QLD)</i>	
14:40	10	Sustainable management models, interstate experience Kate Forrest, Outback Alliance, Regional NRM Alliance	
14:50	10	Carbon flows for graziers Stephen Martin, grazier	
15:00	10	Potential unintended consequences of carbon farming Geoff Edwards <i>(on behalf of Alan Lauder)</i>	
15:10	10	Reflections from a grazier and pasture scientist Ian Beale, Mungallala	
15:20	10	Industry-led engagement in rural policy: Learnings from past, lessons for future Mike Guerin, CEO AgForce	
15:30	20	Panel discussion, questions, and synthesis Group conversation. Notes and observations documented.	
15:40	15	AFTERNOON TEA	

15:55	45	Reflections on the Day – Plenary First feedback loop - Reports from synthesis panels Open conversation and focus on lines of convergence with Declaration structure
16:40	10	Comment and wrap on Day 1 Invitation for nominations: People’s Choice panellists for extended comment (on Day 2)
16:50		CLOSE

Dialogue Dinner and Speaker

Southern Cross Pavilion, Royal on the Park Hotel, Alice St Brisbane, 7pm.

Guest speaker **Major General Stephen Day**, National Coordinator-General for Drought



Day 2 – Tues, July 2

Time	Mins	Segment
08:30	30	Pre-meeting Coffee: Presentations from commercial sponsors Phil Tickle, Cibo Labs www.cibolabs.com.au Dr Terry McCosker, Resource Consulting Services, www.rcsaustralia.com.au
09:00	10	Ring the Bell -- Welcome and account of where we are now... Framework for Day 2
09:10	4 x 10min	People's choice for second sparks: Selection of 4
09:50	15	Insurance and the future of risk: Rangelands priorities Joel Berlin, SunCorp
10:05	10	Earth Charter: a foundation for Rangelands stewardship Clem Campbell, Immediate Past President of the United Nations Association of Australia, Queensland chapter
10:15	20	Pastoralist's View Lindsay Godfrey, Mayor, Shire of Paroo and Tinnenburra, Cunnamulla
10:35	15	Connecting to country, concepts of stewardship and the next generation of agriculture Nikki Thompson, Soil2Soul
10:50	20	Morning Tea
11:10	30	Carbon farming - a sustainable future for Qld Ag Land Restoration Fund objectives / Challenges of current ACCU framework / What changed land management practice delivers Don Butler, Senior Scientist, Land Restoration Fund, Department of Environment and Science
11:55	45	Draft work from synthesis panels: review by whole group Second feedback loop - Representation of panel views - display of findings - Observations / Refinement / Prioritisation
12:40	10	Reflections from AgForce Georgie Somerset, Chair

12:50	5	Wrap of morning - Format for the afternoon - Invite to lunch
13.00	45	LUNCH
13.45	140	Dialogue and reflective conversations -- Format of this session to be determined by the meeting
15:05	15	Co-host conclusions Geoff Edwards, Greg Leach, and Ian Heiner provide reflections and insights from the proceedings.
15:20	5	MC: Process for the afternoon (eg, drafting teams; ongoing conversations) Thanks to sponsors, participants and process / Close of group formalities / Invite to tea
15.25	15	Afternoon Tea
15:40	...	Media opportunities for those who wish to meet media
15.40	60	Declaration drafting Drafting team and volunteers to work on Declaration. All participants are welcome to be involved. Table groups to work to specific clauses.
16.45		CLOSE

Focus bioregions

The Brigalow Belt, Mulga Lands, Channel Country, Desert Uplands, NW Highlands, Einasleigh Uplands, Gulf Country, Mitchell Grass Downs and Cape York Peninsula.

The Dialogue will have implications and learnings for all rural enterprise and all rural localities, however, the focus does not include the cropping lands or hobby farming. Although many of the policy settings are under Commonwealth control, and these can be debated and findings documented, the focus is on Queensland.

Venue

111 George Street, Brisbane. Wi-Fi will be available.

Towards a Declaration

The Dialogue is aimed at producing a Declaration as one form of tangible outcome from the time we spend together.

What should such a Declaration look like? Who is it directed toward?

These questions, and more, will be in play at the Dialogue.

As a starting point, the Committee is suggesting that the Declaration take a structure along these lines:

1: In the face...

This section will identify the 5 key problems/opportunities that are driving rangelands decline/health. From the broad range of concerns, we will want to synthesise and prioritise. As a group we can actively condense and refine. The final enumeration of (pressures) will be up to the wordsmiths.

2: We need...

This section will prioritise the 4 key changes that are needed to reverse the decline and encourage a trend upwards. It is fundamentally connected to processes, or mechanisms for change, that can be measured or observed.

The “we” in this statement is implicitly the public at large...these priorities can be relatively broad as they address the big picture drivers in (1).

3: Therefore, the signatories commit to...

The intent of this section is to enumerate specific actions that *this group* collectively and individually, are willing to commit to, complete with explicit timeframes.

The concept is that we (the undersigned) are going to take steps forward under our own steam. Some of us will make it a priority to lobby other entities to do something, eg, for Govt to formulate a Rangelands Policy. However, this Declaration is self-contained in the sense that it declares its own intentions for action.

Foyer presenters/features

- Royal Society of Queensland
- AgForce
- Outback Alliance / Rangelands NRM Alliance
- Australian Conservation Foundation
- World Wildlife Fund
- Land Restoration Fund
- The Australian Electrical Vehicle Association
- Cibo Labs
- Rural Consulting Services

Personnel

Organising Committee: John Brisbin (NRM), Dr Geoff Edwards and James Hansen (Royal Society of Queensland), Dr Greg Leach (AgForce), Ian Heiner (NRM)

Steering Committee Chair Dr Geoff Edwards

Administration Coordinator: Pam Lauder (attendance register, venue, catering) admin@royalsocietyqld.org

Technology Coordinator: Lane Pilon (file transfer, printing)

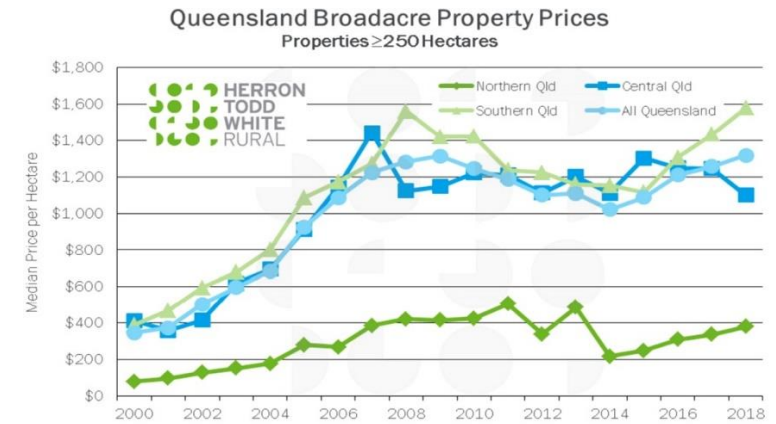
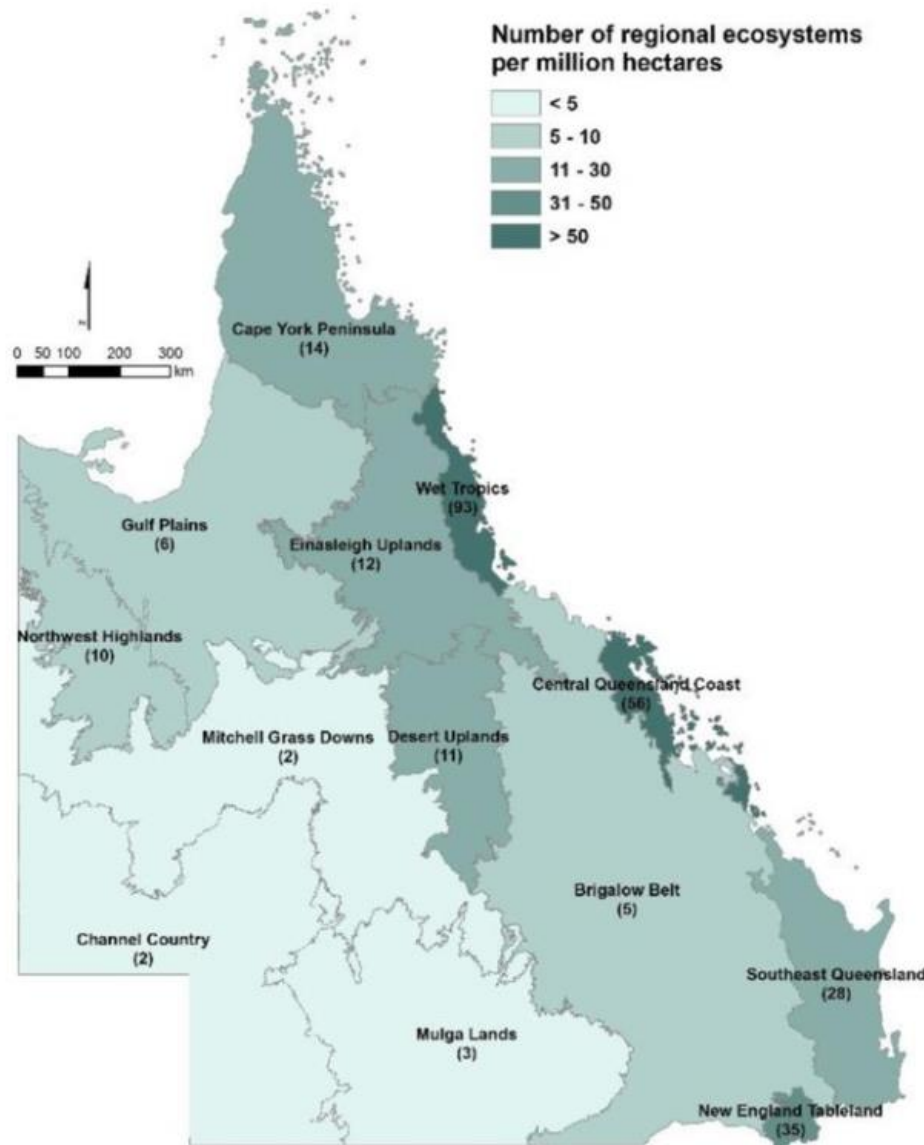
Webmaster: John Tennock (Royal Society of Queensland) john@tennock.com

Coordinator of Writing Team: Des Hoban (author, *Bushcare: A Citizen's Audit*)

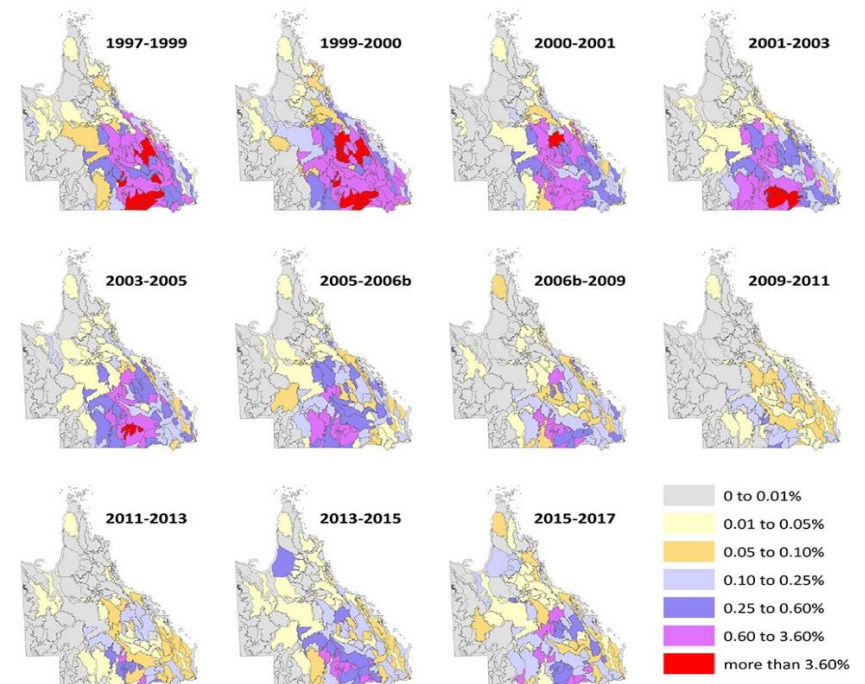
Coordinator of peer review of Rangelands Briefs: To be confirmed.

Reference materials online

<http://www.royalsocietyqld.org/rural-policy-for-queensland/rangelands-policy-dialogue-after-drought-and-debt-what-next/>



Source: HTW Analysis of RPData



Accad, Arnon & Neldner, Victor & Wilson, Bruce & Niehus, Rosemary & McDonald, Bill & Ford, Andrew. (2019). The Vegetation of Queensland. Description of Broad Vegetation Groups Version 4.0.

Average annual clearing rate of remnant regional ecosystem vegetation as a percentage of the starting year by subregion. ([source](#))