



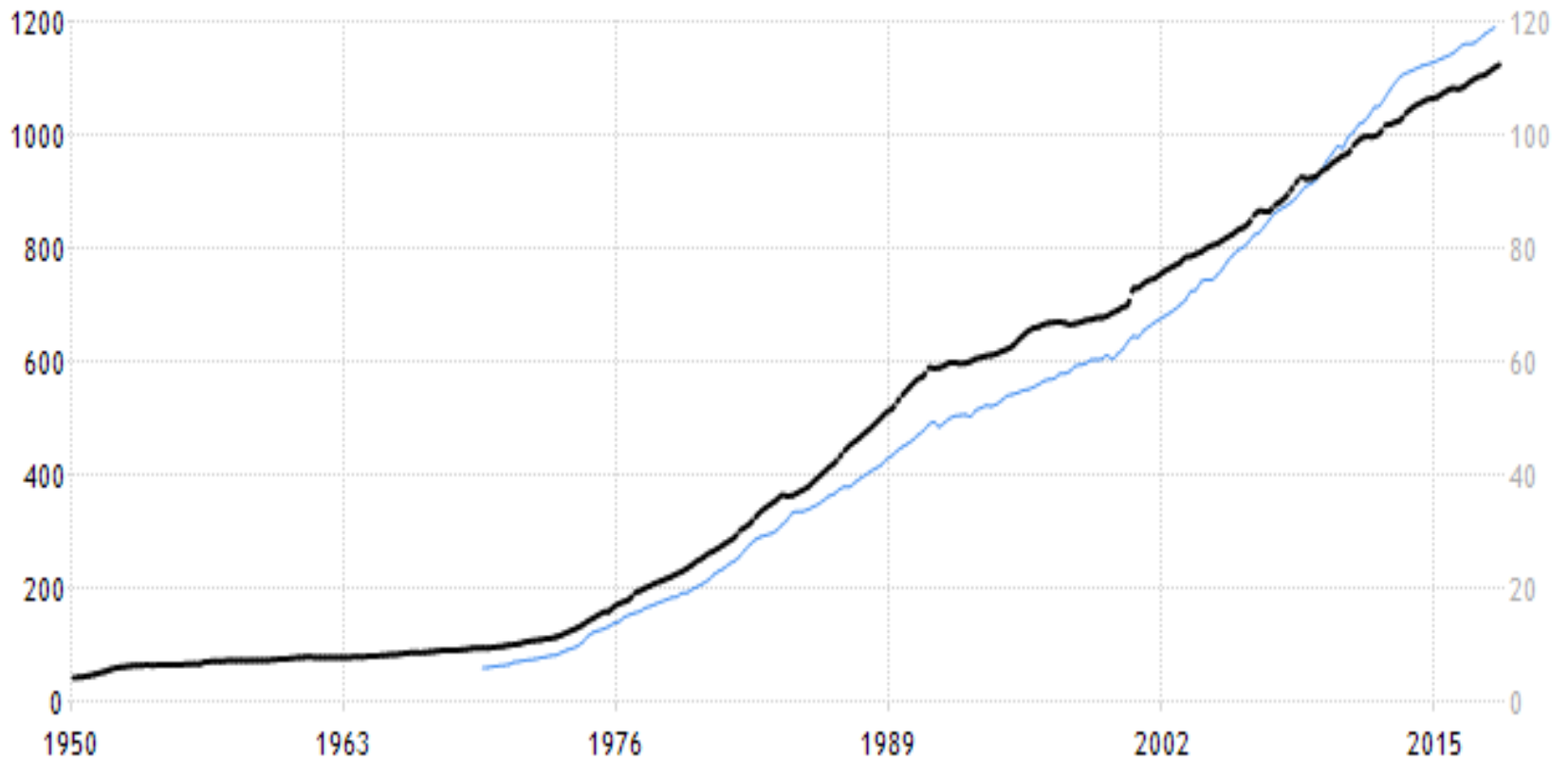
# ***A Pastoralist's View***

**Cr Lindsay Godfrey**

**Mayor – Paroo Shire  
Council**

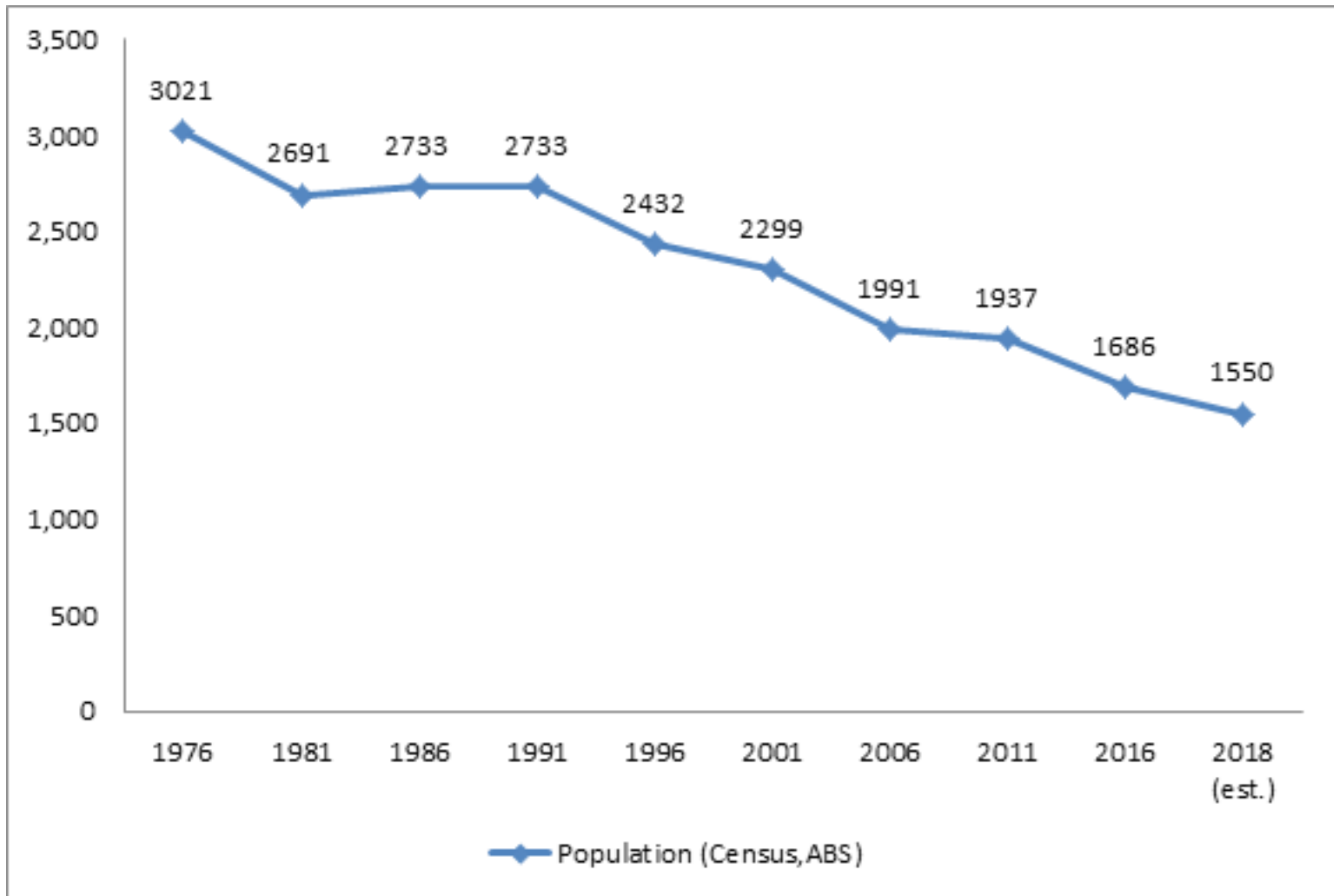
# CPI Index

— AUSTRALIA AVERAGE WEEKL...    ..... AUSTRALIA CONSUMER PRIC..



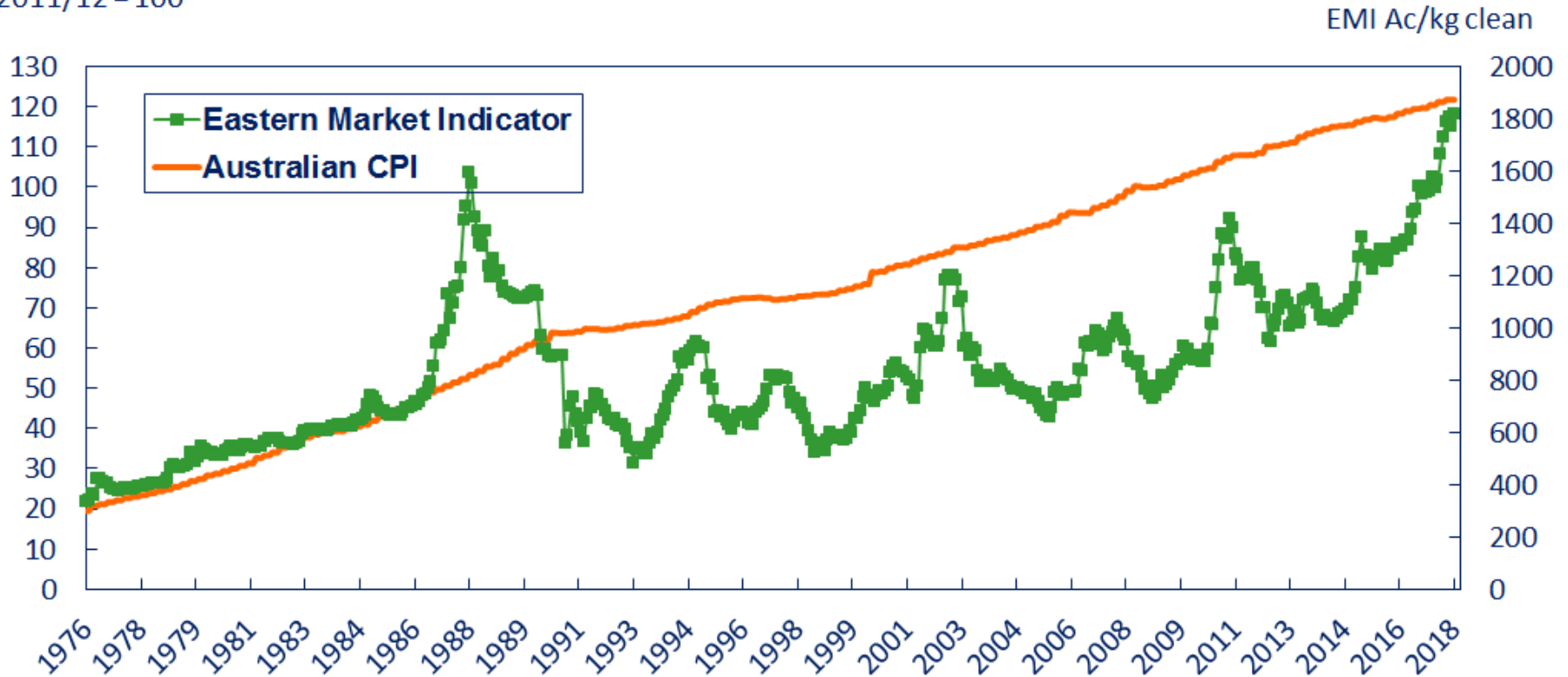
SOURCE: TRADINGECONOMICS.COM

# Paroo Shire – Population Data



# Australian Wool Prices vs Australian CPI

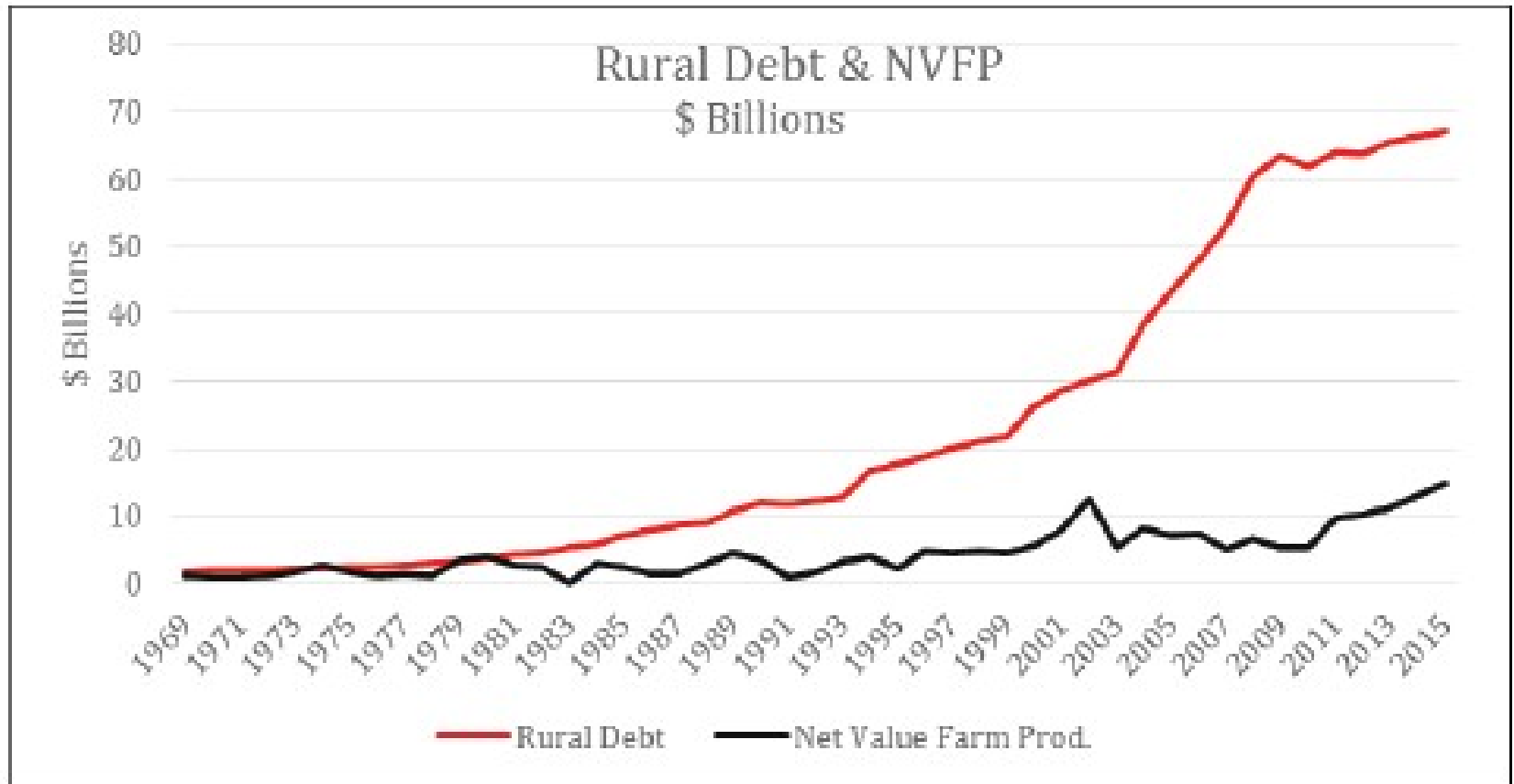
CPI  
2011/12 = 100



Source: AWEX, Reserve Bank of Australia, AWC, Poimena Analysis  
Data to 27<sup>th</sup> April 2018  
EMI is on the 2017/18 basis



**Fig. 1 Rural Debt & Net Value Farm Production, Australia 1969 -2015**

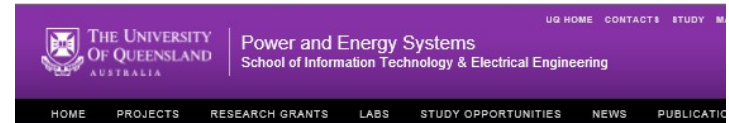


Compiled from ABARES Australian Commodity statistics 2015 and earlier editions, Debt from RBA statics Table Dg online.

# Briefing for South Western Mayors



Prof Simon Bartlett, Australian Chair of Transmission, 6<sup>th</sup> Feb 2017



Home > Professor Simon Bartlett AM

## Professor Simon Bartlett AM

BE(Hons); BSc; FTSE; FIE Aust; FAICD; MIEEE; RPEQ; CPEng

The Powerlink Australian Chair in Electricity Transmission, Professor Bartlett is responsible for providing leadership to the Australian academic sector that supports the Australian Power Industry. The role includes establishing and maintaining strong links with the power industry in Australia and internationally to ensure that the educational and research services provided by the University are aligned with and meet the evolving needs of the power industry.



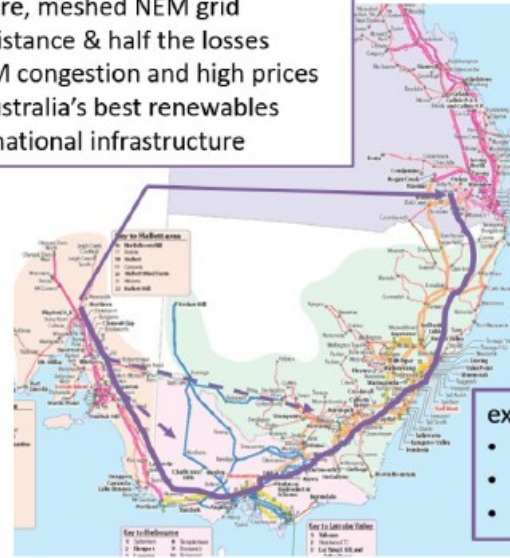
Professor Simon Bartlett AM was educated in Engineering and Science at the University of Queensland and is a Fellow of the Australian Academy of Technological Sciences and Engineering, Fellow of the Institution of Engineers Australia and Fellow of the Australian Institute of Company Directors. He was awarded the IET Sir Lionel Hooke Award in 2007, Queensland Electrical Engineer of the Year in 2008 and Australian Professional Engineer of the Year in 2009. His outstanding contribution to the Australian Power Industry and the Engineering Profession was also recognized in 2012 through the award of Member of the Order of Australia.

Simon has forty years' experience in the Power industry in electricity transmission and power generation in Australia, Europe and Canada. His recent industry roles have included Chief Operating Officer and Acting Chief Executive of Powerlink Queensland, Director of Electranet SA, Chairman of the Australian Power Institute, Deputy Chairman of Cigre Australia, and member of the AEMC Reliability Panel and AEMO Operating Committees.

In late 2012, Simon retired from his operating roles in the Power Industry to take up a full time position as Professor at the University of Queensland as the API/Powerlink Chair in Electricity Transmission.

# SOLUTION is to MESH the NEM

- form secure, meshed NEM grid
- half the distance & half the losses
- avoid NEM congestion and high prices
- enable Australia's best renewables
- strategic national infrastructure



- existing piecemeal route
- “all eggs in one basket”
  - heavily congested
  - high transmission losses

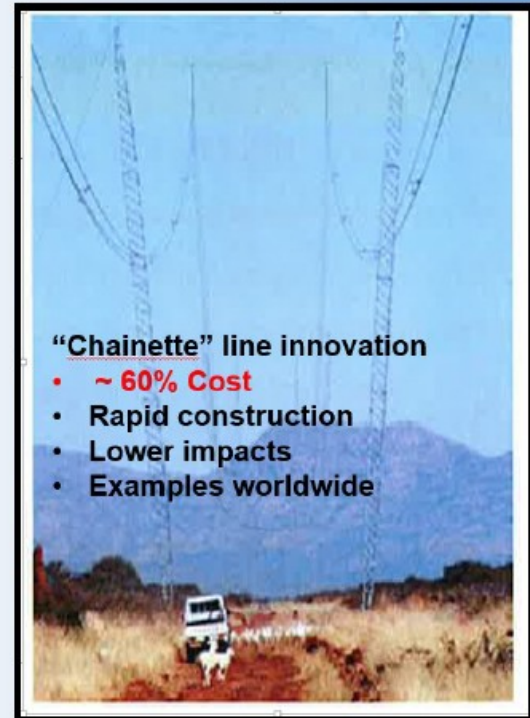


## Preliminary Costs and Benefits

Estimated Cost of ARCMesh	
Qld to SA HVDC transmission line	\$0.9 billion
Terminal stations in SA and Qld	\$0.5 billion
Central Australia Renewables Hub (later)	\$0.3 billion
<b>Total initial ARCMesh Investment</b>	<b>\$1.4 billion</b>

Estimated Benefits of ARCMesh	
Rectify SA Power System Security Issues	\$0.9 billion
Qld and NEM Reliability Benefits	\$0.4 billion
Improve NEM Efficiency	\$0.7 billion
Facilitate Australia's best renewables	\$0.6 billion
<b>Total Benefits</b>	<b>\$2.6 billion</b>
<b>Net Benefits (after all costs)</b>	<b>\$0.5 billion</b>



### “Chainette” line innovation

- ~ 60% Cost
- Rapid construction
- Lower impacts
- Examples worldwide

## short-term, mid-term and long-term solutions



CRICOS Provider No 00025B

Short term solutions to power system security and high pool prices in SA and Qld

Mid-term solutions that maximise utilisation of best coal and gas fired generation

Long-term solutions to develop best renewable resources and large scale energy storage

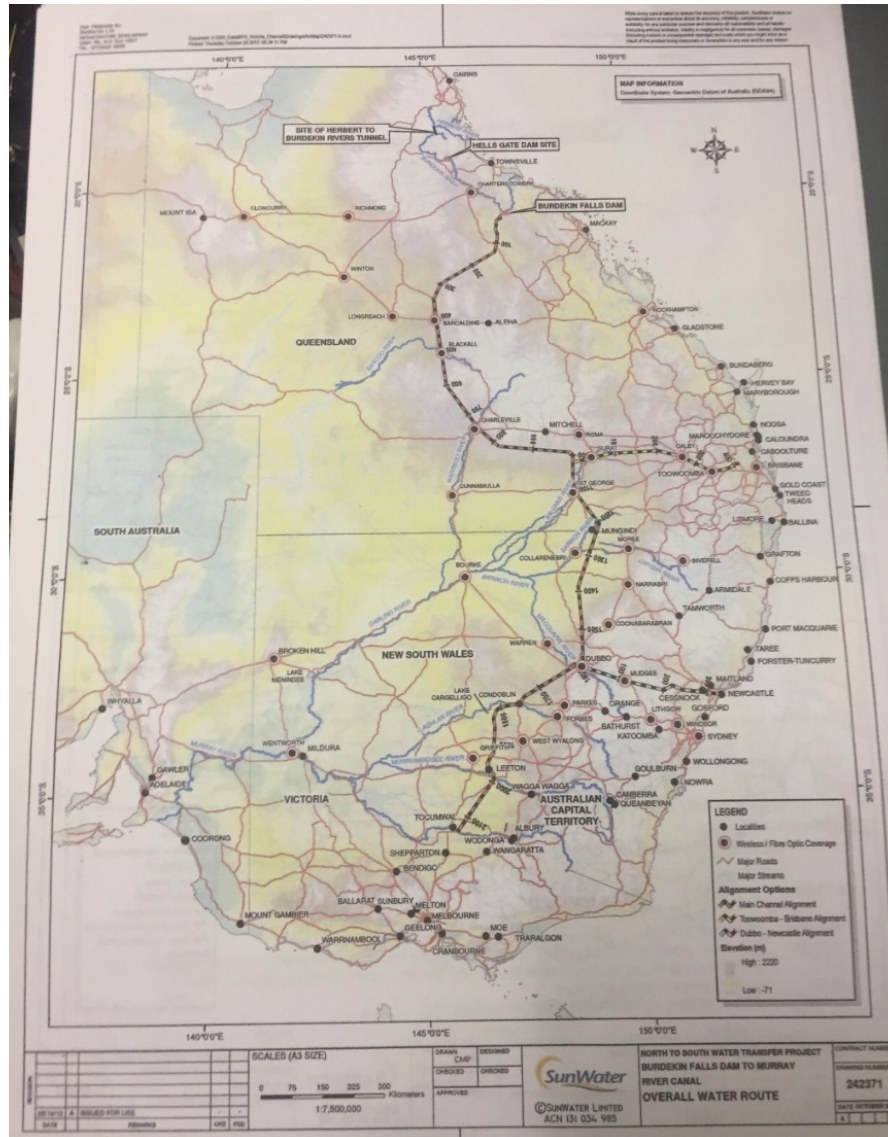
ARCMesh - Australian Renewable Connection Meshing the NEM

Leveraging international and national expertise and innovations

Contact Simon Bartlett mob 0411600584 email [ARCMesh@mail.com](mailto:ARCMesh@mail.com)



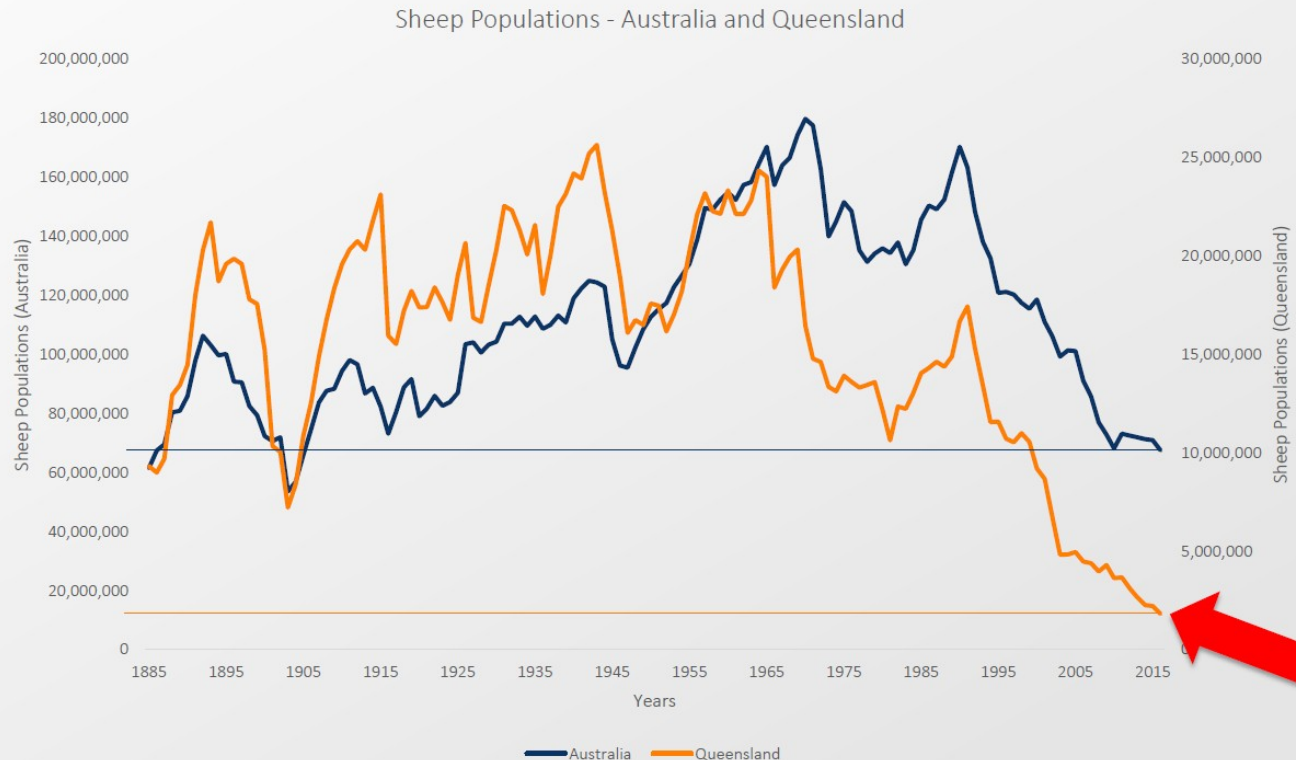
# Burdekin/SunWater Map



# Sheep Populations

## Context - the problem?

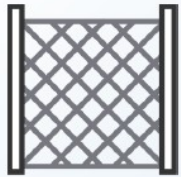
- Dramatic decline in sheep numbers in regional and remote Queensland attributable to increasing prevalence of wild dogs
- Sheep numbers – lowest ever!\*



\* ABS (2013)

\* MLA (2017)

# Economic Benefits of Cluster Fencing



**1,908 km**  
of fencing



**115**  
properties



**15**  
clusters



**1.89 M ha**  
protected

## PROJECTIONS



**\$108-428**  
**million**  
NPV



**\$18**  
**million**  
regional  
spending



**126**  
additional  
jobs in region

## SOUTH WEST NRM CLUSTER FENCING\*

- This is an additional fencing project cover areas across the South West
- 69% of funding to be through landholders

\*South West Natural Resource Management Ltd. (2017)



*Footprints in the Mud by M Johnstone 2019 #ParooPride Photography Competition Runner-Up*